

## Glow plug circuit fault (36)

**Date of issue:**  
11-08-2014

**Reason :**

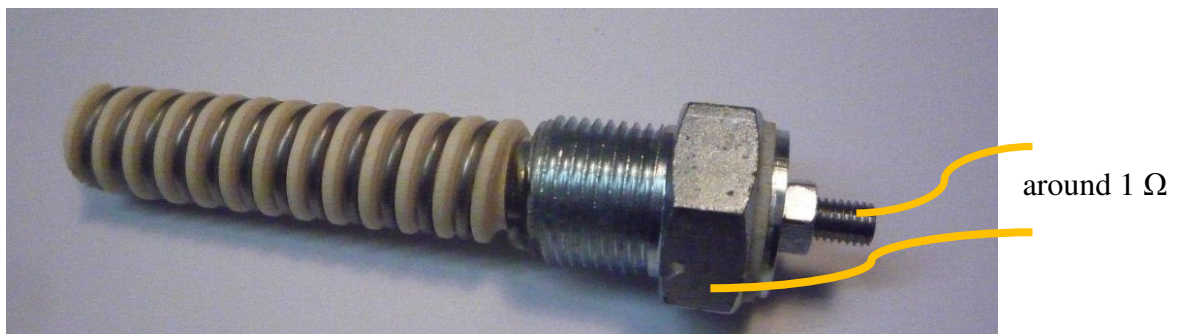
Fault 36 refers to a problem with the Glow plug circuit.  
The fault will be detected during start-up.

**Possible causes:**

1. The glow plug has a broken wire
2. The glow plug fuse is blown
3. There is a bad connection in the glow plug circuit
4. The glow plug PCB is faulty
5. The main electronics PCB is faulty

**Possible Fixes:**

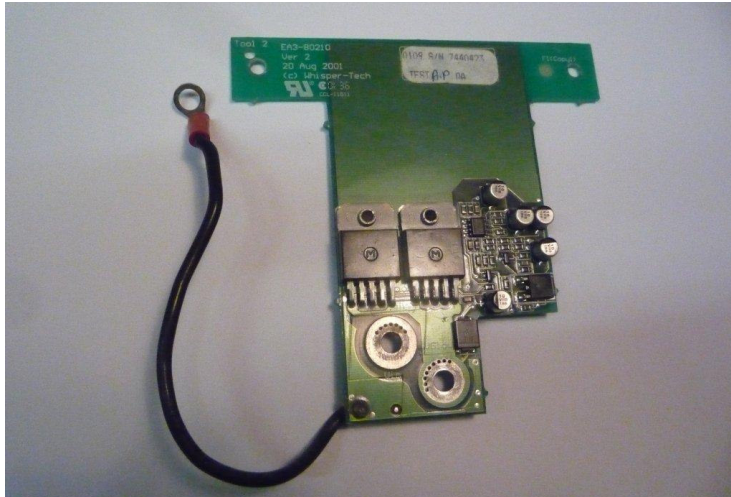
1. Check the glow plug for continuity and resistance.



2. Check the 32A glow plug fuse inside the electronics box.



3. Check the pink coloured wire between glow plug and electronics for continuity. Also check the earth wire between burner shell (below fan connection) and engine base.
4. When previous checks show no faults, the glow plug PCB might be faulty. The only way to verify this is to replace the PCB with a spare part.



The photo below shows the screws to remove the glow plug PCB.



5. If none of the above fixes the problem, the main PCB is faulty and the complete electronics needs to be replaced.