

Section 2 – Commissioning

Checking the installation



ATTENTION:

- All installations, without exception, must be thoroughly checked over prior to commencing commissioning. Any attempt to start the WhisperGen™ before this is done may void the warranty if damage results.
- Commissioning can only be undertaken by a factory trained and authorised technician.

Commissioning- Checking the installation

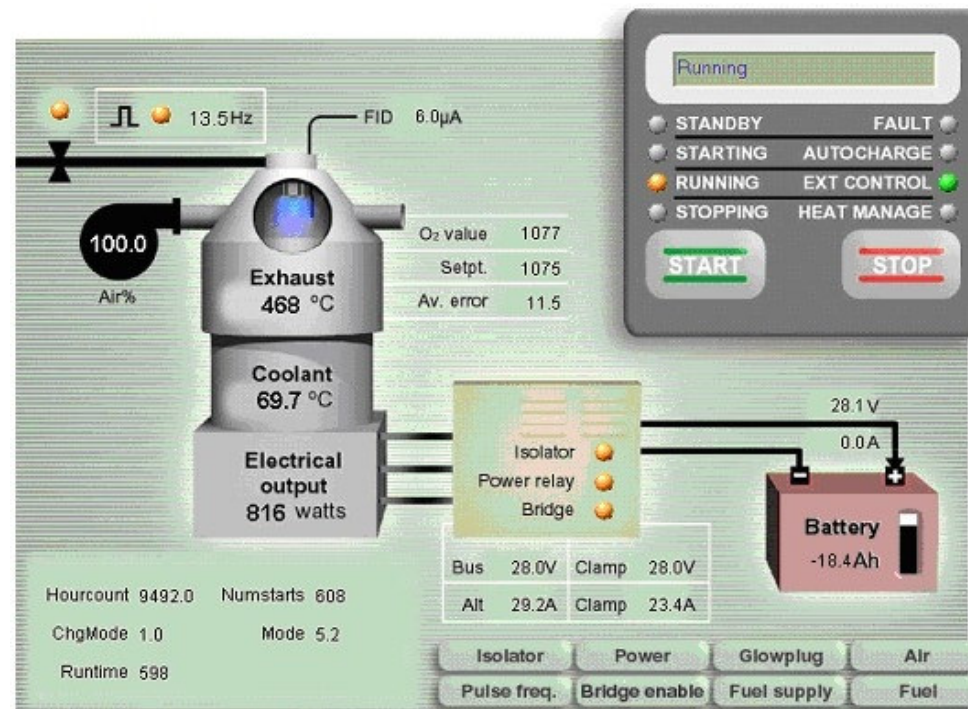


- The installation check list is at the back of the Installation Manual.
- Run through the check list to ensure that the installation has been carried out correctly.
- Any areas that are not compliant must be rectified before the commissioning process can be started.
- If the installation is deemed to be 100% correct, commissioning can begin.

Commissioning- Tools you will need

You will need:

- Gas pressure gauge
- A gas analyser.
- A computer with a serial port and Micromon installed.
- Software package Micromon, an RS232 to 485 converter and comms cables (available from WG)
- The Installation manual and Commissioning guide.
- Flow gauge (optional)



Commissioning- First start



The first start attempt must be made only when *the results of all checks on all systems are deemed to be successful.*

With particular attention to:

- The Primary Coolant circuit flow is within the given limits
- The Secondary Cooling system is functioning correctly (final check on this can only be observed when the block temperature has reached set point)
- The fuel system flow rate is observed to be within given limits.
- See the Installation Manual for further system parameters

Commissioning- Using Micromon



- Connect the laptop or PC via the series cable, RS232 to RS485 converter and patch cable.
- Open the Micromon program, enter the password, and use the screen data and software to:
 - Record, monitor and adjust the operation of the WhisperGen™
 - Set operating parameters and variables to suit the boat's electrical system and the owners preference.
- See Micromon Manual on the disc

Commissioning- Correct Flow



- Primary coolant flow is essential to proper operation of the WhisperGen™ therefore it is imperative that the system flow rate is within the specified flow rate, ie **6-11L/min**
- If the primary coolant circuit flow seems borderline, a flow gauge can be inserted in the circuit to verify the flow.
- If the flow rate is below the specified rate, action should be taken to reduce the head loss of the system. The resultant improvements should be noted on the commissioning form.

Commissioning- Handover to the user



You should cover the following with the user

- Safety & emergency procedures
- Dealing with faults and lock-outs
- Using the control panel / setting the system
- How to use the User Manual
- Getting the best from their WhisperGen™
- Who to contact for service and assistance

End of Section 2



End of section 2

Commissioning

Next section 3

[Service and maintenance](#)